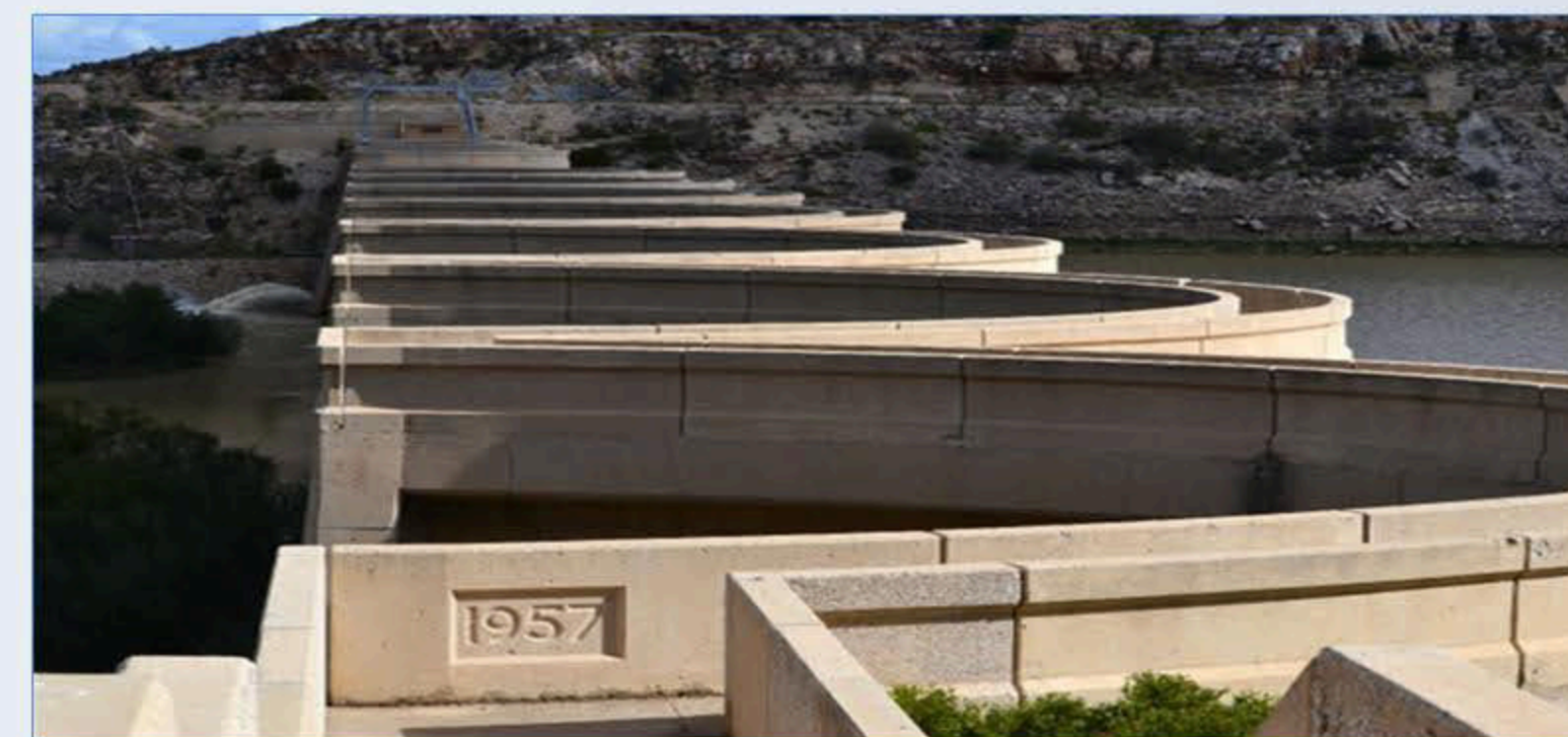
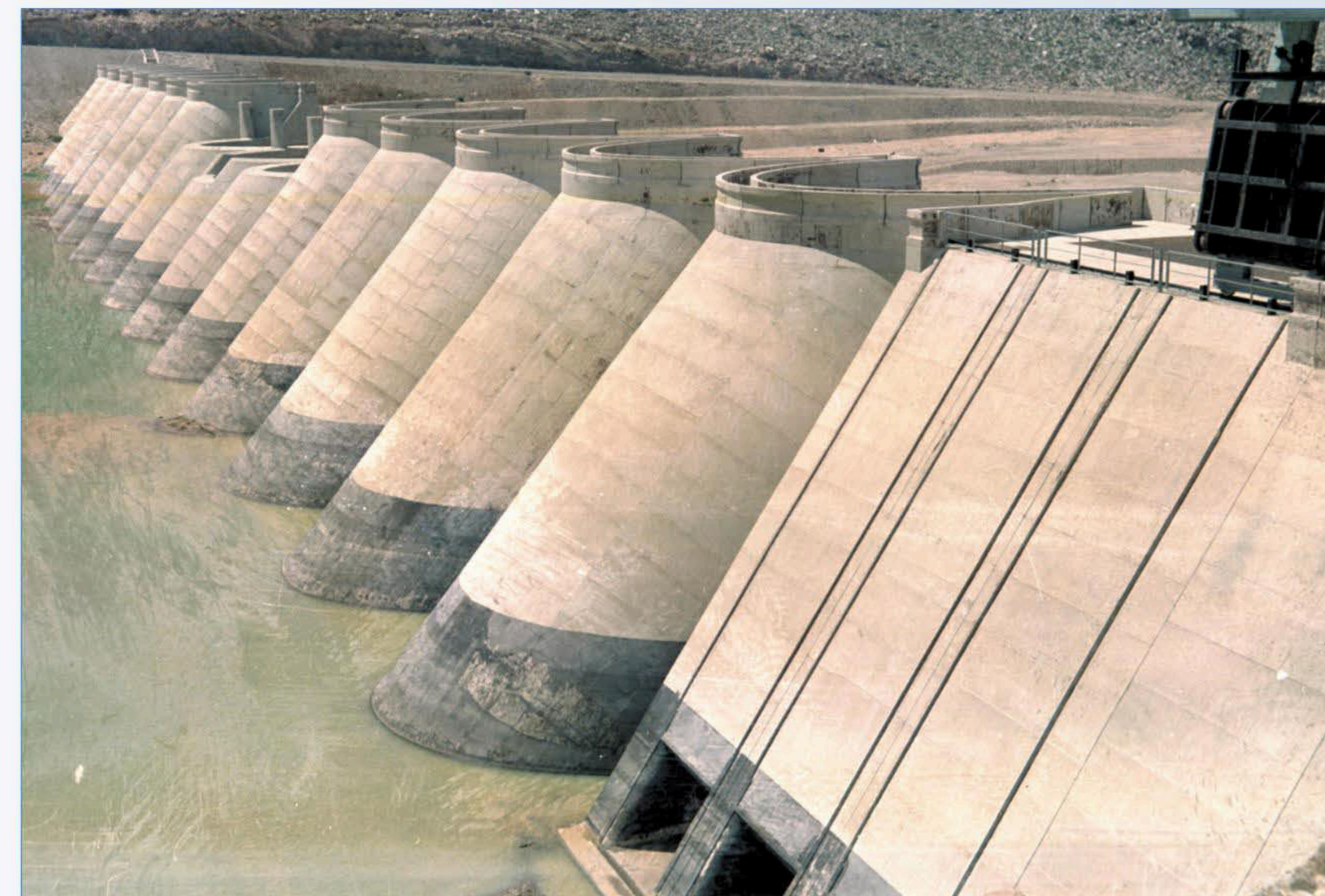


The main purpose of the dam is to provide flood absorption. The Karoo sediments in the area contain a lot of salts and it has been found that lengthy storage of water results in high water salinity. Any flood water is used as quickly as possible by the downstream irrigators and the reservoir is kept empty for extended periods.



1958



BEERVLEI DAM (33.076559 S; 23.491536 E)		
Completed: 1957	River: Groot River.	Capacity: 85.8 million m ³
Type of dam: Multi-arch dam.		
Length of wall (top): 348 m	Length of dam (longest distance from wall to inflow): 5 km	
Nearest town: Willowmore.		Surface area: 231 ha
Water use: Flood control and irrigation.		

References, literature and photos:
References: https://en.wikipedia.org/wiki/Beervlei_Dam;
Photos: DWA; <https://tracks4africa.co.za/>; <http://www.saforums.co.za/>